

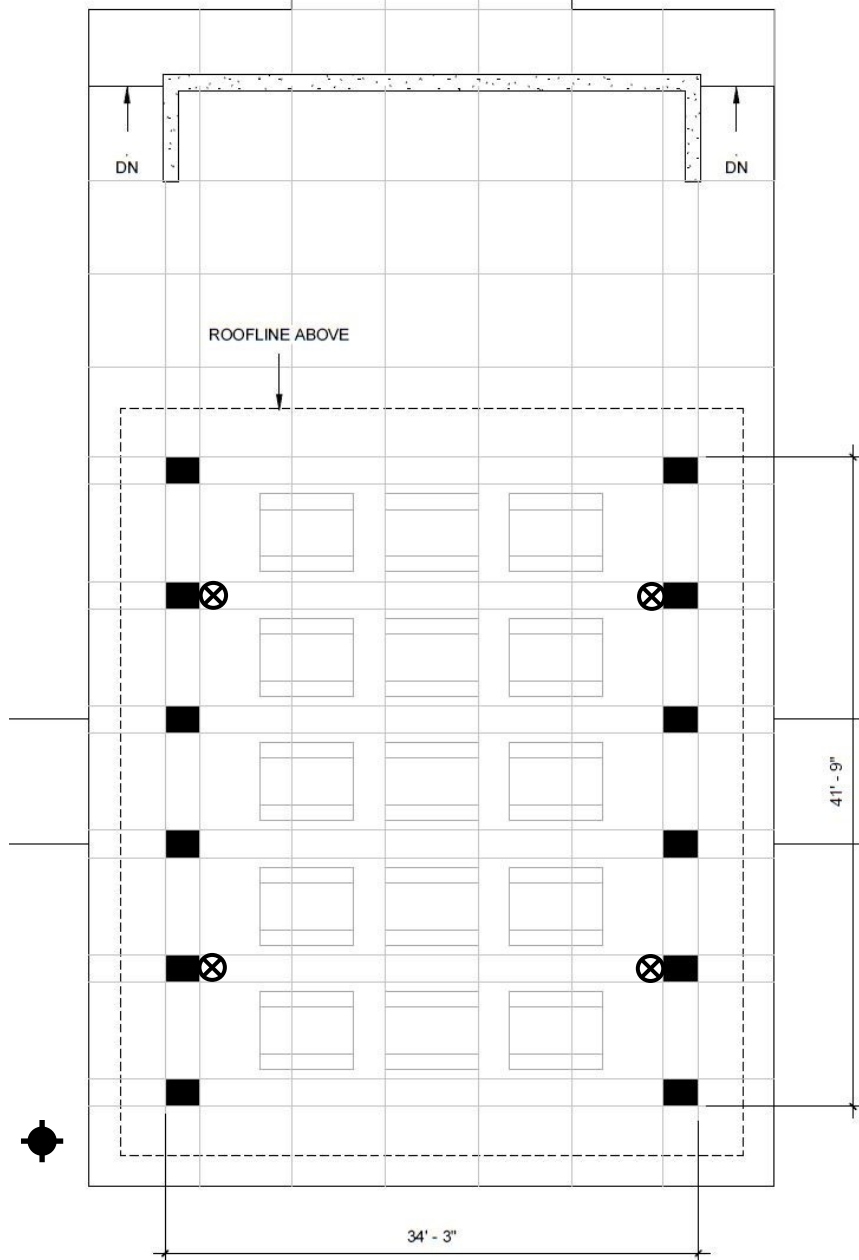
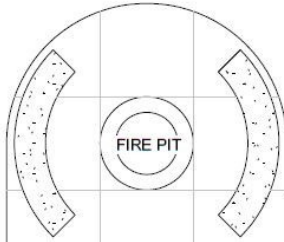


EAST PAVILION

WARRICK COUNTY PARKS DEPARTMENT

812-897-6200

WARRICKCOUNTYPARKS.COM



FEATURES

**ELECTRICAL: 225 AMP, 120/240V,
RUNNING 20 AMP RECEPTACLES**

⊗ **ELECTRICAL OUTLETS AND LIGHT FIXTURES**

⊕ **FIRE HYDRANT - WATER**

COVERED SPACE: 34' 3" X 41' 9"

PICNIC SEATING: 75 PEOPLE

FIRE PIT



EAST PAVILION - FIREPIT



EAST PAVILION - SEATING AREA